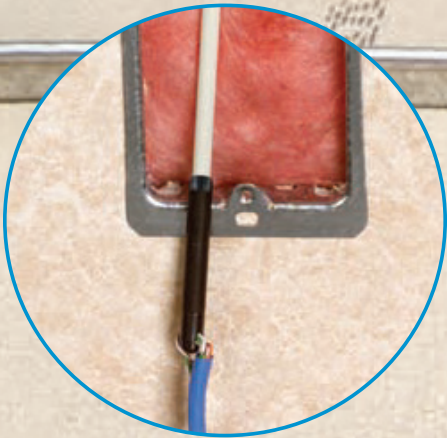




TUFF-ROD™ FISHING POLE KITS

AVAILABLE IN REGULAR FLEX AND EXTRA FLEX GLOW

Threaded extended rods
ensure durable performance.



Tuff-Rod™ is an excellent choice for pulling wire where insulation is already installed.

THE ELECTRICIAN'S
CHAMPION™



idealind.com

TUFF-ROD™ FISHING POLE KITS

Tuff-Rod™ Fishing Poles were designed with flexibility and performance in mind. They feature a crimped edge, gel coat, and reinforced composite pultrusion fiberglass, for a high quality fish pole that is strong and long-lasting.

Ideal for a wide range of electrical and datacom installation situations, select the 'flex' that best suits your application. Whether you are running wire in and around studs, or pulling over long distances in a drop-ceiling, Tuff-Rod™ is the optimal choice. For low-light situations, choose Tuff-Rod™ with Glow, a pale green, luminescent fiberglass.

Accessory heads are available in three styles for maximum functionality. Repair kits are also available which allow for quick and easy repairs in the field.

FEATURES

- Non-conductive fiberglass in regular or extra flex
- 1/4" white and 3/16" glow-in-the-dark
- Three tip types available for maximum flexibility in a variety of applications
- Threaded extension rods and attachments
- Consistent and durable performance
- Repair kit allows for in-field, quick repairs and component replacements



Bullet nose

Two diameters to choose from (1/4" and 3/16") in white and glow, non-conductive fiberglass

Whisk

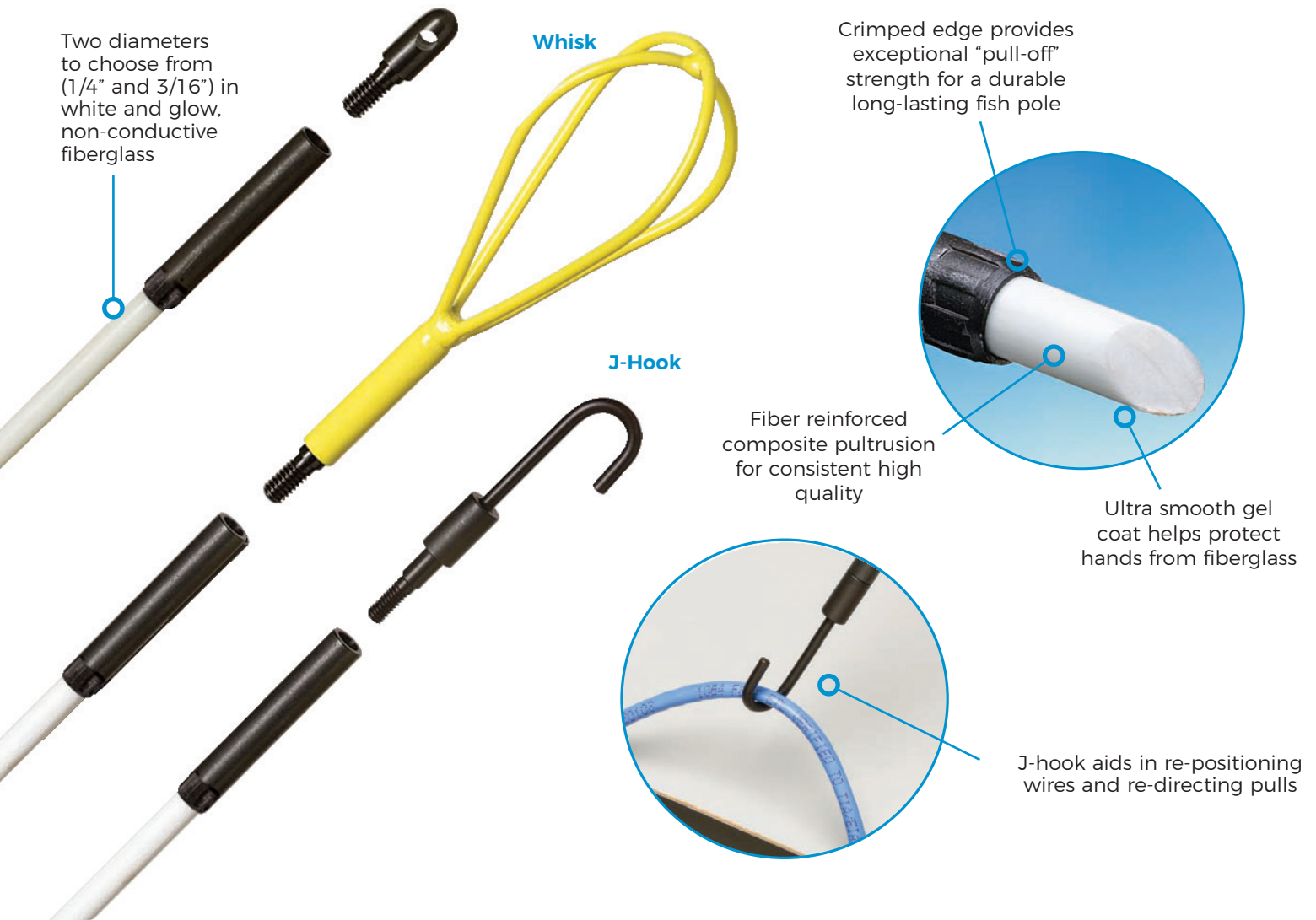
J-Hook

Crimped edge provides exceptional "pull-off" strength for a durable long-lasting fish pole

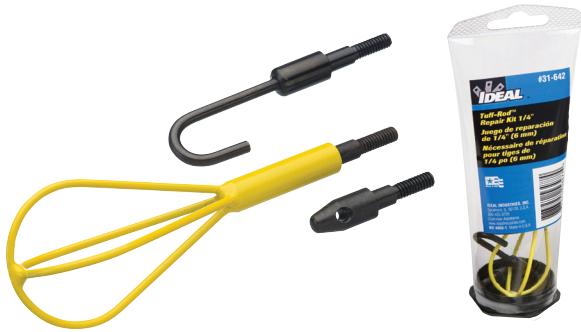
Fiber reinforced composite pultrusion for consistent high quality

Ultra smooth gel coat helps protect hands from fiberglass

J-hook aids in re-positioning wires and re-directing pulls



ACCESSORY KITS



Tip Accessory Kits

Includes three different accessory heads to allow for quick changes to simplify every job.

Clear Tube Kits

For convenient storage and added protection to ensure long life



Bulk Pack Kits

ORDERING INFORMATION

	Description	Flex Type	Diameter	Part #
Regular Flex	Three 4' rods (12' total) with one threaded J-hook and one fixed bullet nose end	Regular Flex	1/4 in	31-611
	Four 6' rods (24' total) with one fixed bullet nose and one threaded bullet nose end	Regular Flex	1/4 in	31-612
	Twelve 4' Regular Flex replacement rods	Regular Flex	1/4 in	31-643
	Twelve 6' Regular Flex replacement rods	Regular Flex	1/4 in	31-644
Extra Flex Glow	Two 4' rods (8' total) with one threaded J-hook and one fixed bullet nose	Extra Flex Glow	3/16 in	31-654
	Three 4' rods (12' total) with one threaded J-hook and one fixed bullet nose end	Extra Flex Glow	3/16 in	31-631
	Three 5' rods (15' total) with one threaded J-hook and one fixed bullet nose	Extra Flex Glow	3/16 in	31-653
	Five 6' rods (30' total) with one fixed bullet nose and one threaded bullet nose end	Extra Flex Glow	3/16 in	31-633
	Twelve 4' Extra Flex Glow replacement rods	Extra Flex Glow	3/16 in	31-647
	Twelve 6' Extra Flex Glow replacement rods	Extra Flex Glow	3/16 in	31-648
Accessory Kits	3-Piece accessory kit with threaded bullet nose, J-hook, and whisk	Regular Flex	1/4 in	31-652
	3-Piece accessory kit with threaded bullet nose, J-hook, and whisk	Extra Flex Glow	3/16 in	31-651



P-2466 (9-21)
©2021 IDEAL INDUSTRIES, INC.

IDEAL CUSTOMER SERVICE:
orderdesk@idealindustries.com
1-800-824-3325
www.idealind.com

THE ELECTRICIAN'S
CHAMPION™

